

3DO[®] GAME GURU[™]





Before Using Your 3DO System

Exposure to certain light patterns, flashing lights, or backgrounds, on a television screen or while playing video games, may induce an epileptic seizure in a very small percentage of individuals. Certain conditions may induce previously undetected epileptic symptoms even in persons who have no history of prior seizures or epilepsy. If you, or anyone in your family has an epileptic condition, consult your physician prior to playing. If you experience any of the following symptoms while playing a video game—dizziness, altered vision, eye or muscle twitches, loss of awareness, disorientation, any involuntary movement, or convulsions—**IMMEDIATELY** discontinue use and consult your physician before resuming play.



Table of Contents

<i>Introduction</i>	4
<i>Normal Menu Operations</i>	
Quick Start	4
Setting Up	5
Some Universal Constants	5
<i>Main Menu</i>	6
Code Library	7
Enter Code	8
File List	9
Compress	9
Decompress	10
Copy	10
Delete	11
<i>Settings</i>	12
Serious Options	12
Pretty Options	14
Select Device	15
Save Settings	15
<i>Caution</i>	16
<i>How to Reach Us</i>	
3DO Customer Service	17
The Game Guru	
Internet Hotline	18
Credits	19



Introduction

It's 4am and you're sweating it out in Arena 3. If you could only get your tank to speed up, you'd be home ... but WAIT... where did that WALL come from?

Want to enjoy the intense parts and rocket through the annoying parts that make you want to throw the controller against the wall? Whether it's money, lives or level skips, the 3DO Game Guru is your ticket to continuous game play. We'll give you codes that even the programmers don't have. So what are you waiting for? Get hacking!



Quick Start

Can't wait to get hacking on those games? Are the saved games you want to crack already in NVRAM? Are you a 'Default Options' kinda guy? Then just put that shiny 3DO Game Guru disc in the 3DO and go straight to the 'Code Library'.



Setting Up

1. Make sure your Control Pad is connected to the Control Port on the front of the system.
2. Turn ON the power switch of your 3DO system. The READY light indicates that the unit is on.
3. If you have a 3DO system with a disc tray, press the OPEN/CLOSE button and place your 3DO Game Guru CD on the tray with the label facing up. Press OPEN/CLOSE again to retract the tray. If your 3DO system is top-loading, open the pop-up lid. Insert the 3DO Game Guru CD with the label facing up, and close the lid.

You should see the 3DO logo on your screen within a few seconds. If the 3DO logo does

not appear, turn the system off and repeat the process from step 1.



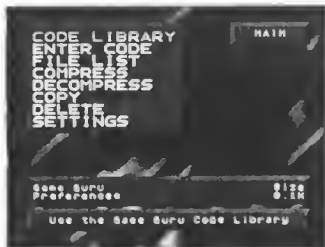
Some Universal Constants

'Universal Constants' apply to nearly all 3DO Game Guru games.

Here are some helpful hints to make the most of the 3DO Game Guru:

- The Stop (X) Button aborts the current operation
- The Left/Right shifts jump to the Top/Bottom
- The A Button is used to complete entry, or select something

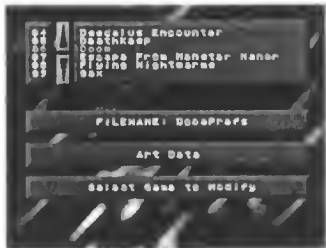
The Main Menu



The Main Menu is where it all happens, it's your launchpad into the world of 3DO game hacking! The most common functions have been selected and placed on this specific menu, with a look and feel that is totally customizable from the Settings/Pretty Menu. All of the menus in the 3DO Game Guru are basically configured the same, and here's an overview: The listing of options is on the upper left portion of the screen, with the particular menu name

written on the upper right. The different options may be selected by moving the cursor pad up and down, or you may use the left/right shifts to jump to the top/bottom of the menu. Just below the menu is the file information box, which contains the file name on the upper left, a description of the file (if available) on the lower left, and the file size (in kilobytes) on the far right side. Directly below the file information box is the mini menu help, which displays a more detailed description of what the currently highlighted function does. Selecting the options is done by highlighting the function, then pressing the A button.

Code Library: Using the 3DO GAME GURU



To help satisfy your need for immediate gratification, the 3DO Game Guru comes with codes for most of the popular games currently out for the 3DO. Not only does this save you paper (to write the other codes down), but it makes patching of files easy and painless.

To patch a file, simply select the game you wish to modify. Once the game has been

selected, you will be presented with a list of cheats for that specific title. After you select the patch you wish to apply, you will be presented with a list of files in NVRAM. The 3DO Game Guru will automatically start with the first saved game for this specific title, but if no save file is found, it will begin with the first file in the directory. Once the file is selected, the patch will be applied, and you're ready to rock'n'roll!

One thing to keep in mind when using codes; if more than one save game is stored in one file (GEX would be one example, where three saved games are stored in one file), then only the first saved game will be modified.

Enter Code: Entering a 3DO GAME GURU Code



The 3DO Game Guru was designed with future game support in mind, and this is achieved through codes. A code is basically a set of instructions telling the 3DO Game Guru how to process a specific file. Most codes can be entered in any order, but one code in particular, the CRC Code, needs to be entered LAST (if the game uses

one). This is to allow the 3DO Game Guru to reinitialize the file to be compatible with the game.

If a code is mistyped, the 3DO Game Guru will notify you, and return to the previous menu.

When entering a code, you will first be prompted to select the save game file you wish to modify. After the file has been selected, you will be presented with the code entry box. If the code is entered, and is valid, the 3DO Game Guru will patch the file, and notify you that the patch has been applied successfully.

File List: Listing of Files in NVRAM*

The File List option is used to display a list of all files on the currently selected device, which in most cases will be the 3DO's internal NVRAM. You may scroll through the list of files using the up and down arrow keys, or you may also jump to the top or bottom of the list using the shift keys. The file information box on the bottom of the screen will reflect any information available about the file which is currently highlighted. If you exit the file list option by pressing the 'A' button, the file you have highlighted will become the current work file and all other file selection options will default to this file.

*Your 3DO system uses NVRAM (non-volatile random access memory) to store saved games. If your memory is full, you will not be able to save additional files. Saved game files can vary from being as small as 20 bytes, to being as much as 20,000 or more bytes.

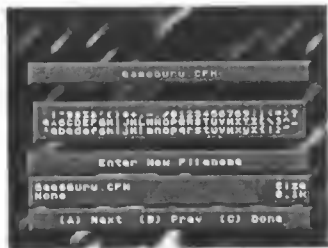
Compress: Compress (shrink) a File

File compression is a way of storing a file, to make it take up less space. Note that a compressed file must be decompressed before it can be accessed. File compression is an excellent way to store large or infrequently used files for long periods of time without running out of free space. To compress a file, select Compress from the main menu, then choose a file from the file list using the up and down arrow keys. When the file is highlighted, press the A button; file compression is an intensive process, and may take up to one minute.

Decompress: Decompress (expand) a File

File Decompress converts a file from its smaller compressed state, to its normal usable state. To decompress a file, select Decompress from the main menu, then choose a file from the file list using the up and down arrow keys. When the file is highlighted, press A; file decompression normally takes less than 10 seconds.

Copy: Make a copy of a File



The Copy File command is used to create a duplicate copy of another file. This command is particularly handy when you want to modify a file, but still want to keep a copy of the original (untampered with) version. To select a file to copy, use the up and down arrow keys. When you have selected the file to be copied, press the A Button. You will then be prompted to enter the new file name in the following way:

Use the direction pad to select the character you want,

Use the A Button to select the highlighted character,

Use the B Button to delete the last character,

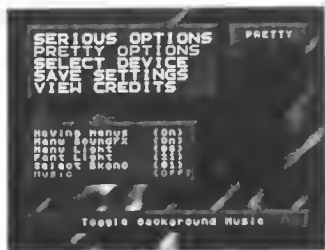
or the C Button when you have selected a file name.



Delete: Delete a File

The Delete File option is used to remove a file from 3DO's internal NVRAM. To delete a file, use the up and down arrow keys to select the file. Once the file is highlighted, press the A button to complete the deletion. You will be prompted with the file name, and asked if you wish to delete this file. If you choose yes, the file will be removed. If you choose no, you will be returned to the main menu.

The Settings Menu



The 3DO Game Guru is very flexible and made to be as intuitive as possible. One of the ways we hope to achieve this is through the Settings Menu, which controls the way things appear throughout the program, and also what default (standard) options are used.

The two primary areas of the Settings Menu are the Serious and Pretty Options areas. As the names imply, the Serious options deal more with the actual operation of the program, while the Pretty options

deal with the look and feel of the program. The other options in the Settings Menu are described in detail later in the manual.

Serious Options

The Serious options are used to help customize the actual operation of the 3DO Game Guru. Here you can set most program default functions, making it more intuitive to use. Here's a description of what all the options do:

Verification

Verification means whether or not the 3DO Game Guru will ask if you're sure about doing something. An example would be; if you have Verification turned On, and you delete a file, it will ask "Are you sure? Delete file [name]?". If Verification is turned Off, it will just delete the file.

Default Answer

Default Answer refers to what the default response is in the Verification option (which must be On for Default Answer to have any effect). If you have Default Answer set to Yes, when the verification box pops up, it will list Yes; if you have Default Answer set to No, it will list No.

Messages

Messages reflects the time (in seconds) that a message will be displayed on the screen. When you save the settings, it responds "Settings Saved".

Mini Menu Help

Mini Menu Help is a descriptive way of listing what each command does. Mini Help is displayed below the file information box, and describes whatever

command is currently being highlighted.

Pass Filenames

Pass Filenames refers to whether or not the file name will be listed in the copy function. With Pass Filenames ON, when you copy a file, and it asks for the new file name, it will start you out with a copy of the original file name that you can then alter. With Pass Filenames OFF, you will have to enter in all the characters yourself.

Auto-Delete

Auto-Delete is used in conjunction with the compress/decompress functions. When Auto-Delete is turned On, the original compressed file will be deleted when it is decompressed. This is the most common setting since in most cases you will not

want both the compressed file and the decompressed versions at the same time.

Compression

Compression is used to set which particularly compression routine will be used by the 3DO Game Guru to compress/decompress files. The two routines currently supported are 'GGC' (3DO Game Guru Compressed), and '3DO' (3DO Compressed). GGC offers better compression, but is slower, while 3DO offers less compression, but a faster compression time.

Pretty Options

The Pretty options deal more with the way the program looks and feels than the way it actually operates. Here's a description of what all the options do:

Moving Menus

When Moving Menus is turned On, the menus will slide on and off of the screen. This feature just looks cool, that's why it's in Pretty options.

Menu SoundFX

If Moving Menus is turned On, the menus will make sliding and crashing sounds when they move. If you want the menus moving, but you don't want the sounds, then turn Menu SoundFX off.

Menu Light

The 3DO Game Guru lets you set the menu background light level, basically making it brighter and darker. This way you can select the best contrast level for your television.

Font Light

Just like Menu Light, this function modifies the light level of the Font.

Select Background

To help let you make the 3DO Game Guru have it's own feel, you can select which background you would like behind the menus.

Music

To hear the awesome InnerSect soundtrack, turn this on.

Select Device: Selecting another Device

To stay compatible with any upcoming hardware that may be released for the 3DO (like a memory card), the 3DO Game Guru let's you select which device you want to work with. In most cases, this will be the 3DO's internal NVRAM.

Save Settings: Save your current Settings

Once you are satisfied with all the changes that you have made in the 3DO Game Guru's settings area, you can save them so it always looks the same. To save your settings, simply highlight the Save Settings option, and press the A Button.



Cautions

There are operations you can perform with this product that may not give you the results you are looking for. There are, for example, some serious ways to corrupt a saved game file.

Nothing you do with this product can damage another game CD. If you should damage a saved game file beyond all usefulness, simply erase the file in question and begin again from scratch.

Also, some option combinations were never intended by the game publisher. Nevertheless, the 3DO Game Guru may enable you to achieve these combinations. If the results are unsatisfactory, you do not have recourse to the original game publisher. An example of this is using the 3DO Game Guru to move your character into an unfinished level via a cheat code. This new level may not have an exit or may have insufficient resources to sustain your character. The original game publisher bears no responsibility for hidden areas and features. The 3DO Game Guru also bears no responsibility in this situation. **Use game cheat codes at your own risk.**



Studio 3DO Customer Service

Call us at:

Customer Service Center

Monday Through Friday

9:00 a.m. - 5:00 p.m. PST

(415) 261-3454

Write us at:

The 3DO Company

Customer Service

600 Galveston Drive

Redwood City, CA 94063-4746

Or get on-line:

- Email: customer-service@3do.com
- If you are a subscriber to Americal Online, enter the key word "3DO" to join our forum
- Visit our home page on the World Wide Web at <http://www.3do.com>

3DO Direct

There's a single hot source for all your 3DO hardware, software, and peripheral needs. It's called 3DO Direct, and it's your direct access too the most amazing experiences in this interactive world. And it couldn't be easier. Just place your order by phone, fax or good ol' U.S. Mail.

Operators are standing by

Monday through Friday,

9:00 a.m. - 5:00 p.m. PST.

Call 3DO Direct at

1.800.336.3506

NOTE:

3DO Customer Support will only support the functions that are listed in this manual.

Please do not call 3DO Customer Support for any other functions.



The Game Guru Internet Hotline

Got a new code that you want
to share...?

Need a legitimate place to get
codes which have been
checked...?

Then check out the Game Guru
Internet Hotline:
gameguru@3do.com.



Credits

**Producer,
Programmer
& Director**
Mark Rearick

Music By
InnerSect

MEGA Artist
Tomwoof (S P Pang)

Game Guru Codes
John Elliott

Lead Tester
John Elliott

Lead 3DO Tester
Noah MacKenzie

Testers
Thom Chumley
Konane Cramer
Karl Fischer
Gary Lake
Mike Rosefield
Sumiko Showalter

Screen Savers
Mark Rearick
Alex Werner

SGI Rendering
Jim Dilettoso
Village Labs

**3DO Adept and
P/T Psychic**
Gary Lake

Manual Writers
Rick Reynolds
Mark Rearick

**People who made
it happen**
Nick Earl
Greg Mills
Gary Lake (Again!!)

3DO Guidance
Mark Erdtmann
Ron Little

Spiritual Guidance
Mitch Ballou

Just Plain Guidance
Gen Kiyooka

Thanks to
Paul Adams
John Byrd
Dave Calabrese
Tom Carter
Tim Cramer
RC Crocitto
Rick Crocitto
John Dishon
Jeff Foster
Nell Haldar
Trip Hawkins
Steve Holme
Bill Huey
Jim Hurwitz

More Thanks to**Ken Loule****Brian May****Brad Montagne****Lisa Sedlak****Rich Shane****Trent Taylor****Karen White****Dan Willis****My Mom & Brother****Dominos Pizza****Los Dos Molinos****Everyone at 3DO****Virtual World****And Especially All the 3DO system Owners!**